



# S. Gerald Ingerson Preserve - Sissy Danforth Rivergate Trail

## S. Gerald Ingerson Preserve

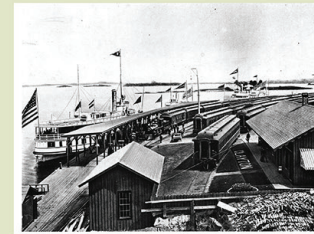
This preserve is a key protector of the McCarn Creek watershed and its adjacent wetlands, successional shrublands, and mature forest. The wide variety of habitats present support a high diversity of birds and mammals. The preserve also protects the historically significant trestle across McCarn Creek.



**Railroad Trestle**  
This historic 160' long, 60' high trestle, with its monumental limestone piers, was built in 1880s to span McCarn Creek.



**Thousand Islands Land Trust (TILT)**  
The TILT Office and Discovery Center is located at the intersection of John Street and the Clayton Riverwalk.

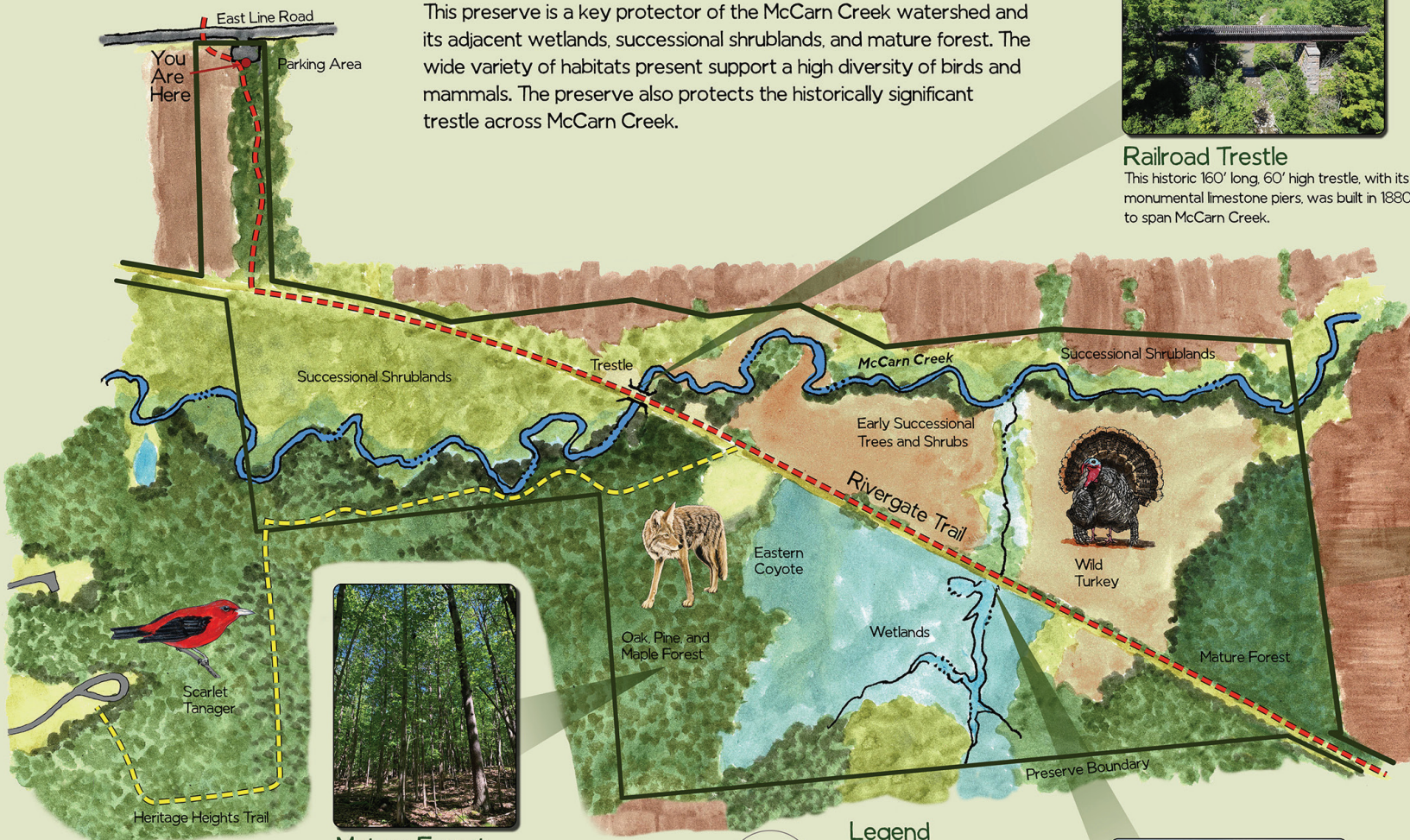


**Clayton Depot**  
The historic depot was the arrival point for tourists heading off to enjoy the Thousand Islands.

**Trains**  
Trains arrived in Clayton with passengers and freight for 99 years. A turntable was built here to re-position the engines for the return trip south.



**Restoring a Historical Connection**  
A busy railroad once brought tourists and summer residents to Clayton from eastern U.S. cities and put Clayton on the map as a recreation hub. The last passenger train arrived in 1951 and the tracks were later abandoned. Now, TILT has restored recreational access to the rail corridor.



**Mature Forest**  
An old forest with stately pines and hardwoods covers the south part of the preserve, and provides habitat for interior forest dwelling bird species.



- Legend**
- Preserve Boundary
  - - - Heritage Heights Trail
  - - - Rivergate Trail



**Wetland Overlook**  
A view looking south across a wetland in the preserve.



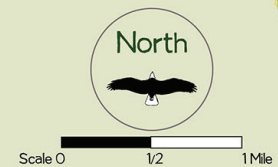
**Indiana Bat**  
The preserve contains habitat that supports the endangered Indiana Bat.



**Trestle View**  
A view downstream of McCarn Creek from the railroad trestle.



**Trail View**  
A typical view along the trail's tree and shrub-lined corridor, which is bordered by adjacent grasslands and agricultural fields.



## Sissy Danforth Rivergate Trail

This 7.5 mile multi-use trail connects LaFargeville and Clayton, offering easy access from both communities to a tranquil and safe recreation opportunity, and a route to the majestic St. Lawrence riverfront. The trail was a dream of local conservationist Louise "Sissy" Danforth, former Executive Director of the Thousand Islands Land Trust, and was named in her honor.

**PRESERVE RULES**

We encourage you to enjoy hiking, biking, bird watching, cross-country skiing, and snow shoeing, and to please help us steward this preserve for the enjoyment of future generations.

Hunting, dumping, camping, fires, motorized vehicles, plant collecting, and tree removal is prohibited.

The Thousand Islands Land Trust Inc. (TILT) is a not-for-profit corporation that conserves the region's natural beauty, diverse wildlife habitats, water quality and outdoor recreation opportunities through education, easement and property acquisition, and stewardship. Funding for this interpretive panel was made possible through the Land Trust Alliance NYS Conservation Partnership Program.